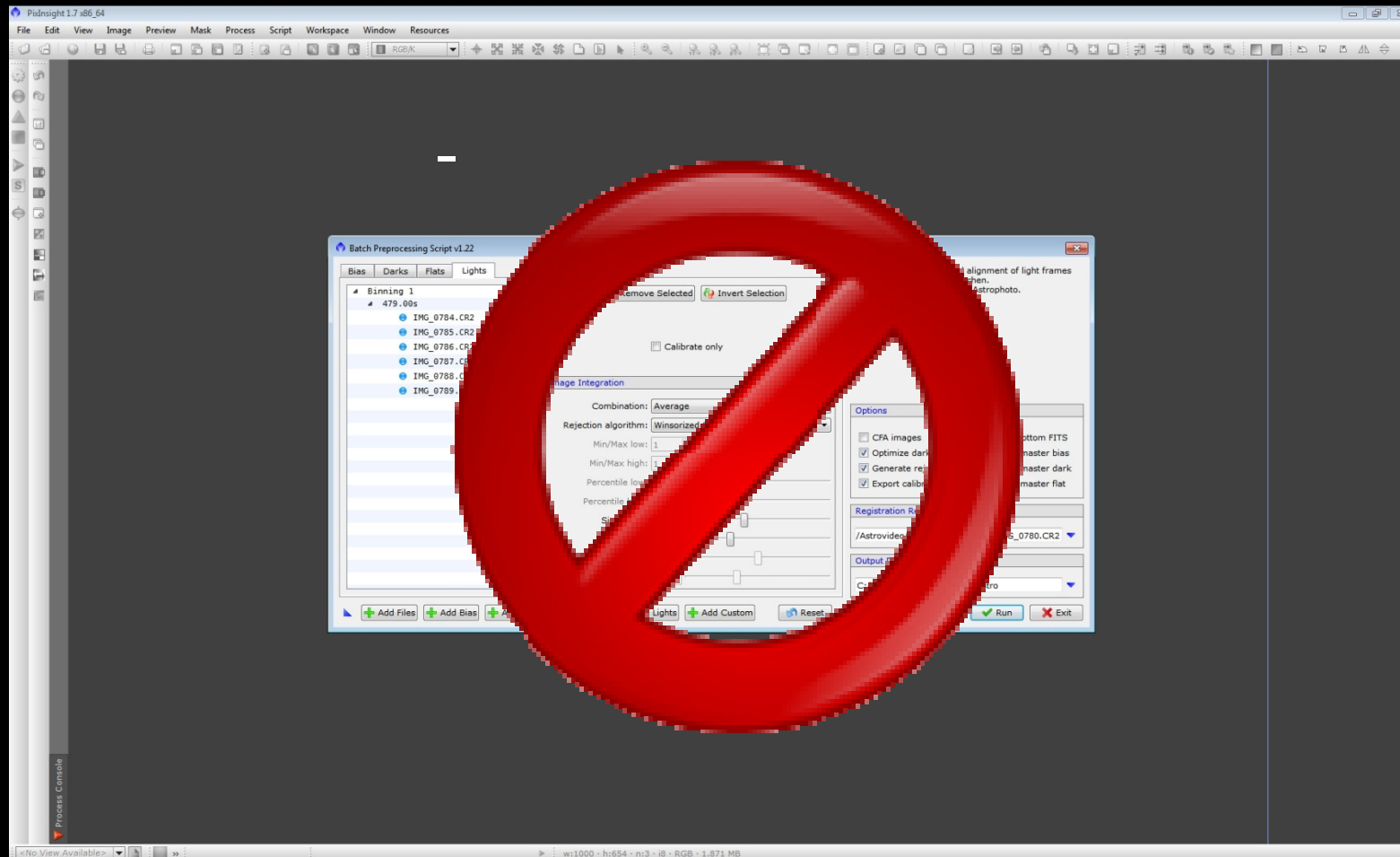


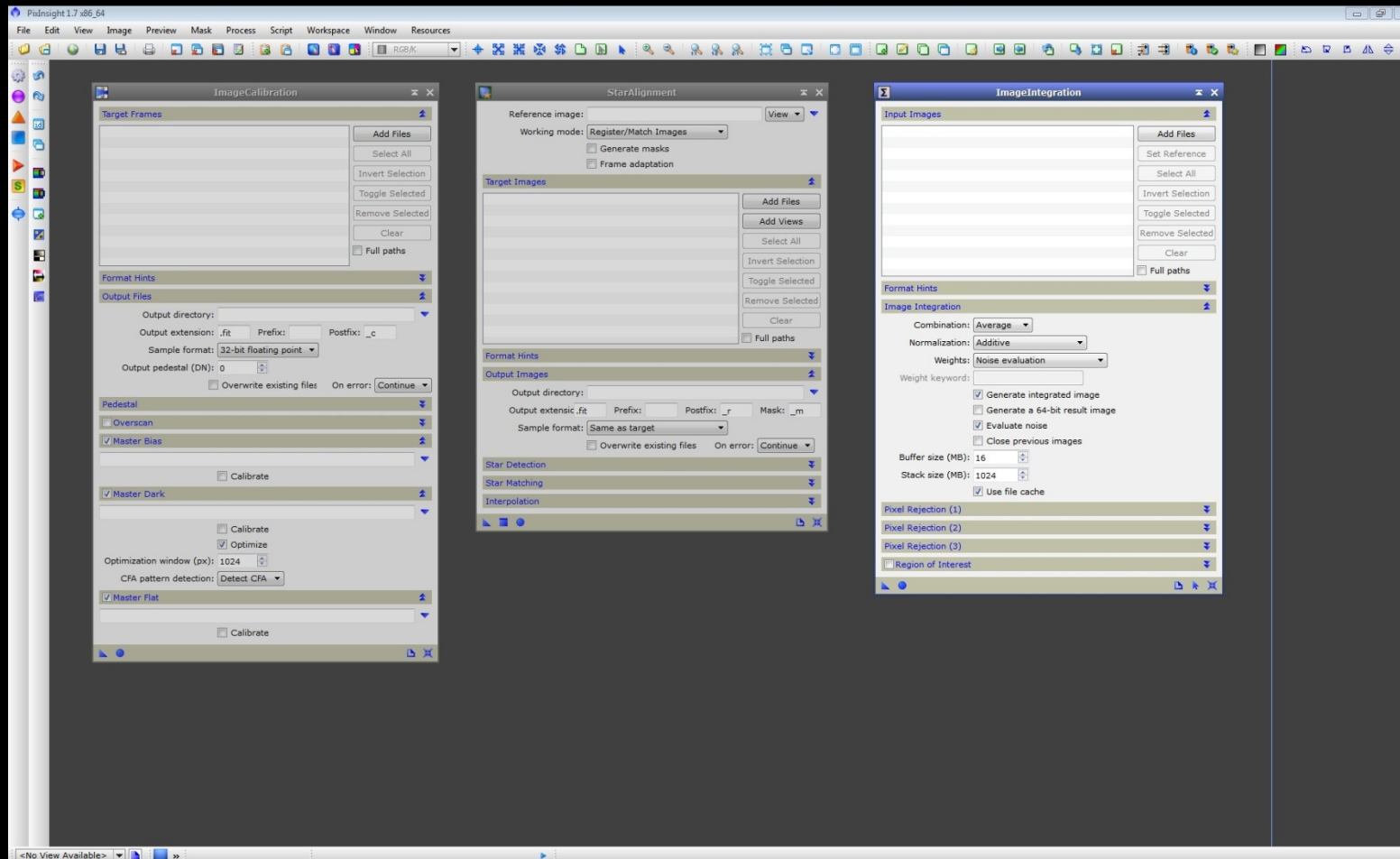
Die Farben des Universums

ASTROPHOTOGRAPHIE VON ANTINA UND KARSTEN MÖLLER

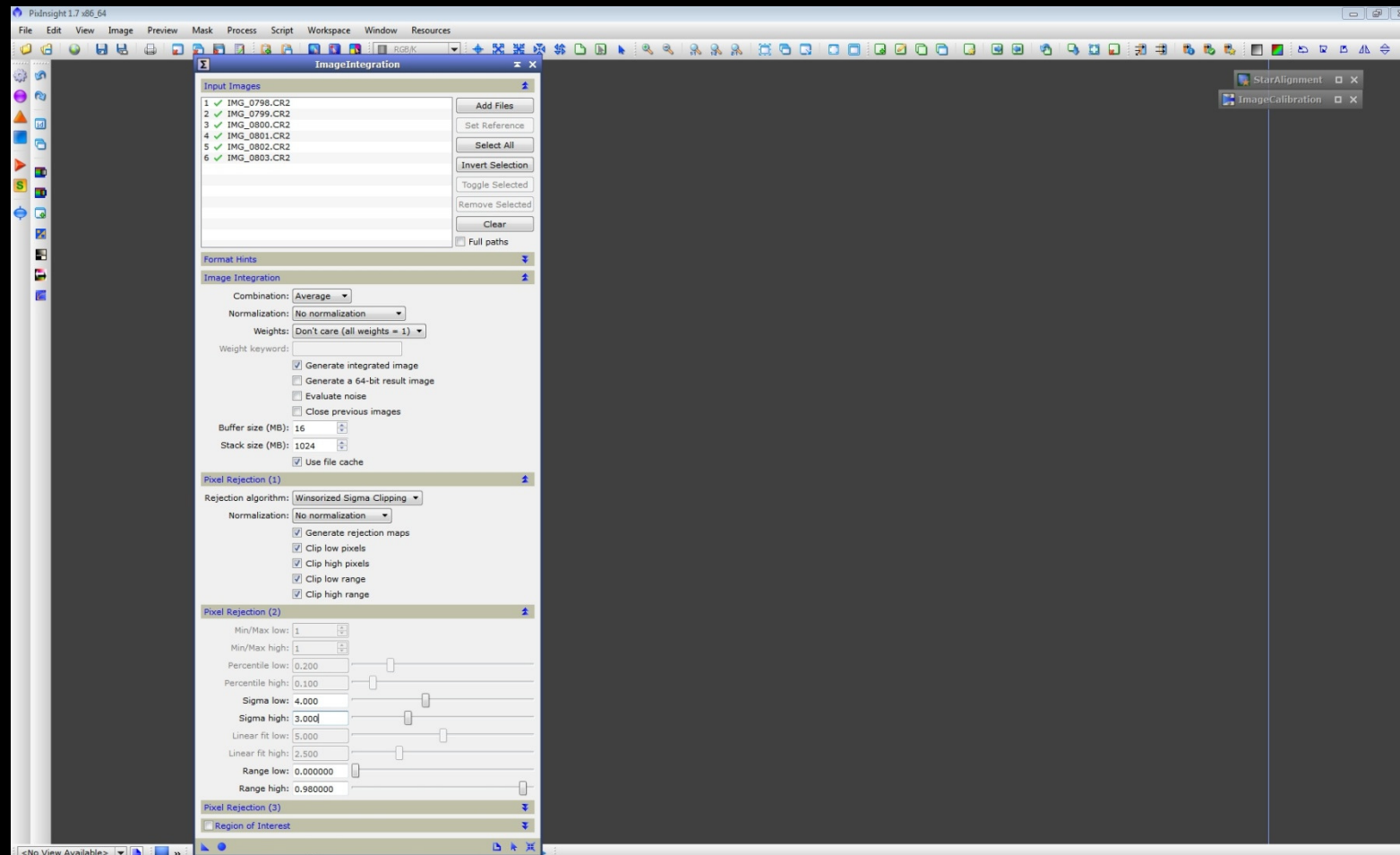
Preprocessing in Pixinsight



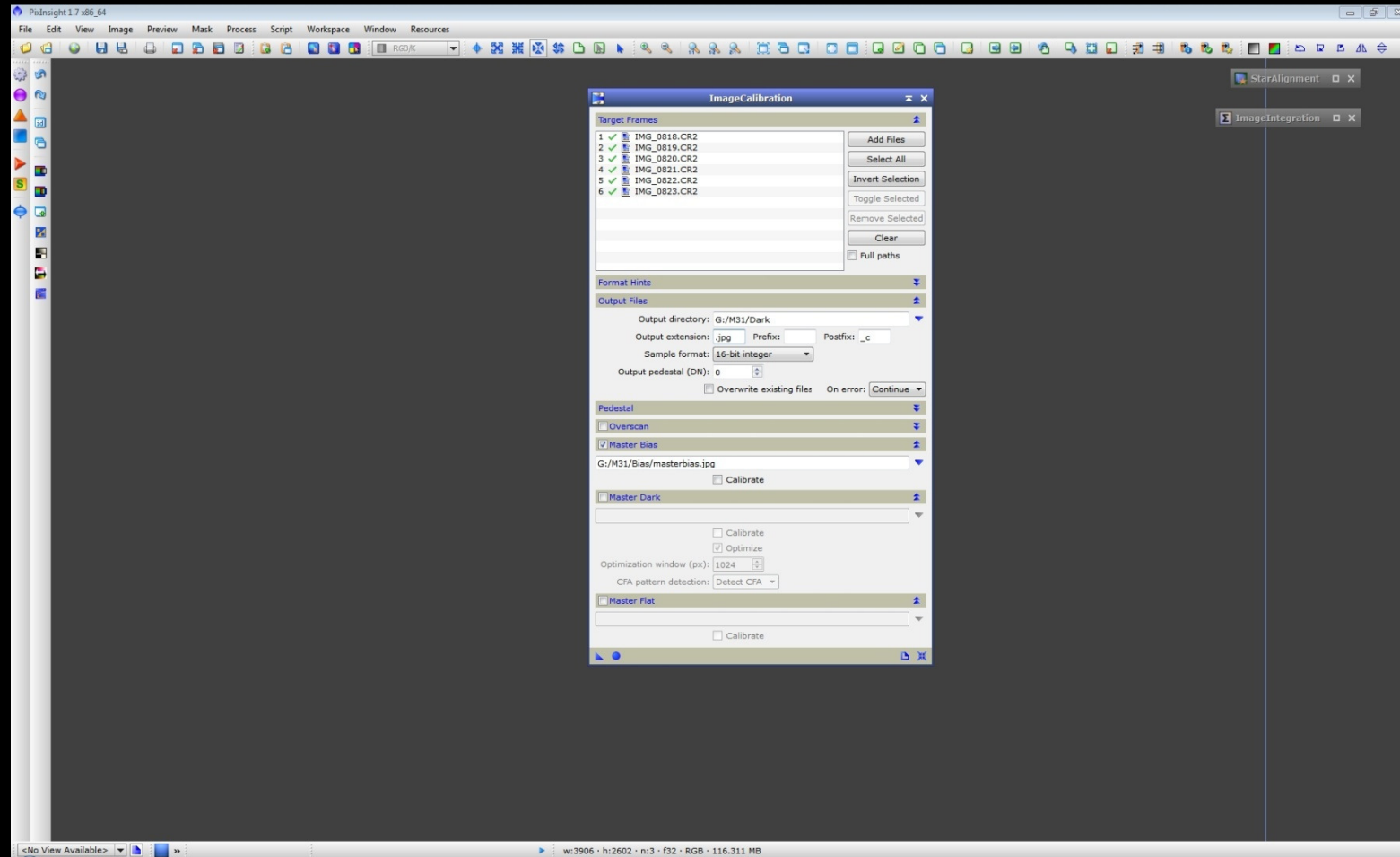
Batch Preprocessing



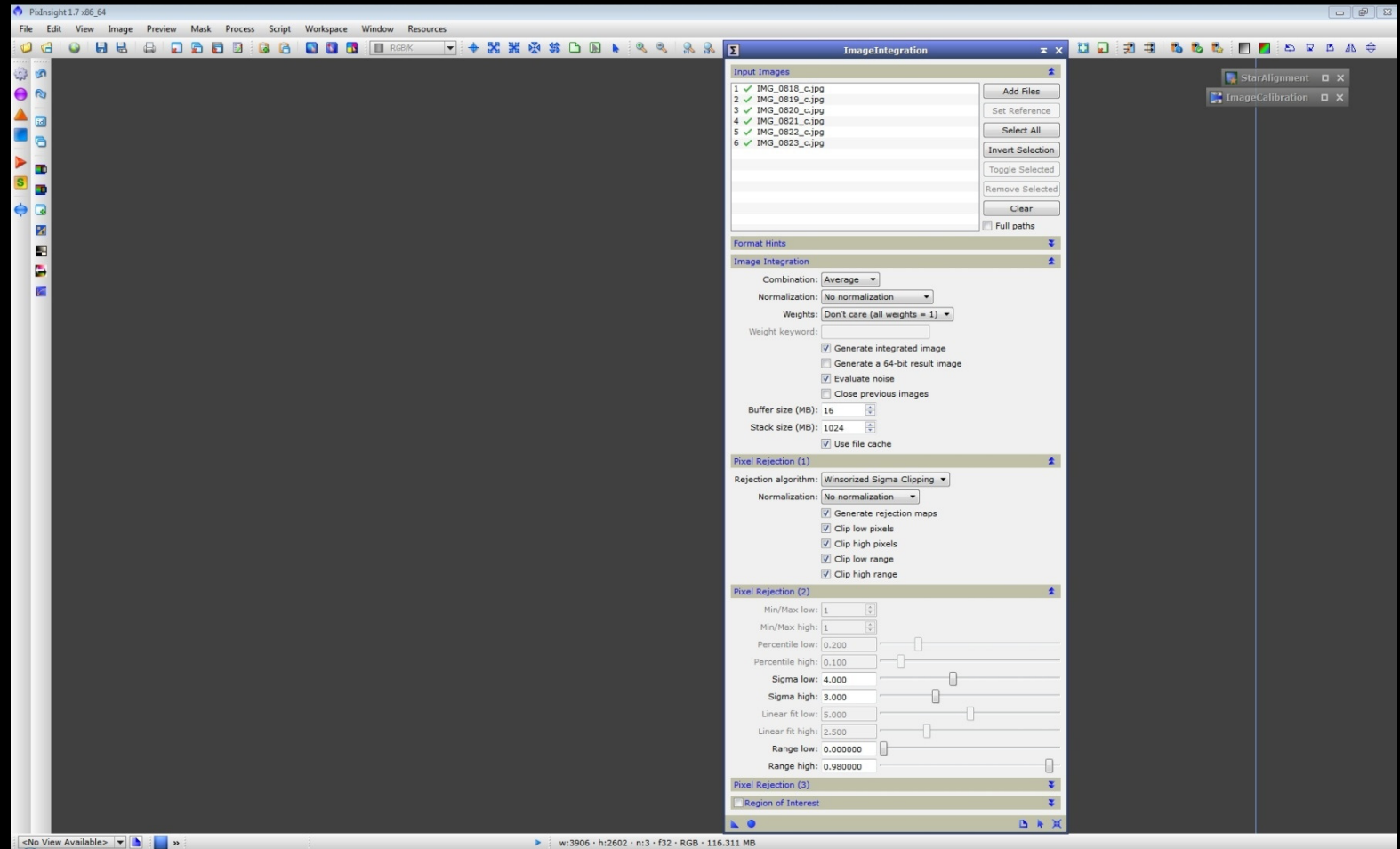
Übersicht der verwendeten Prozesse



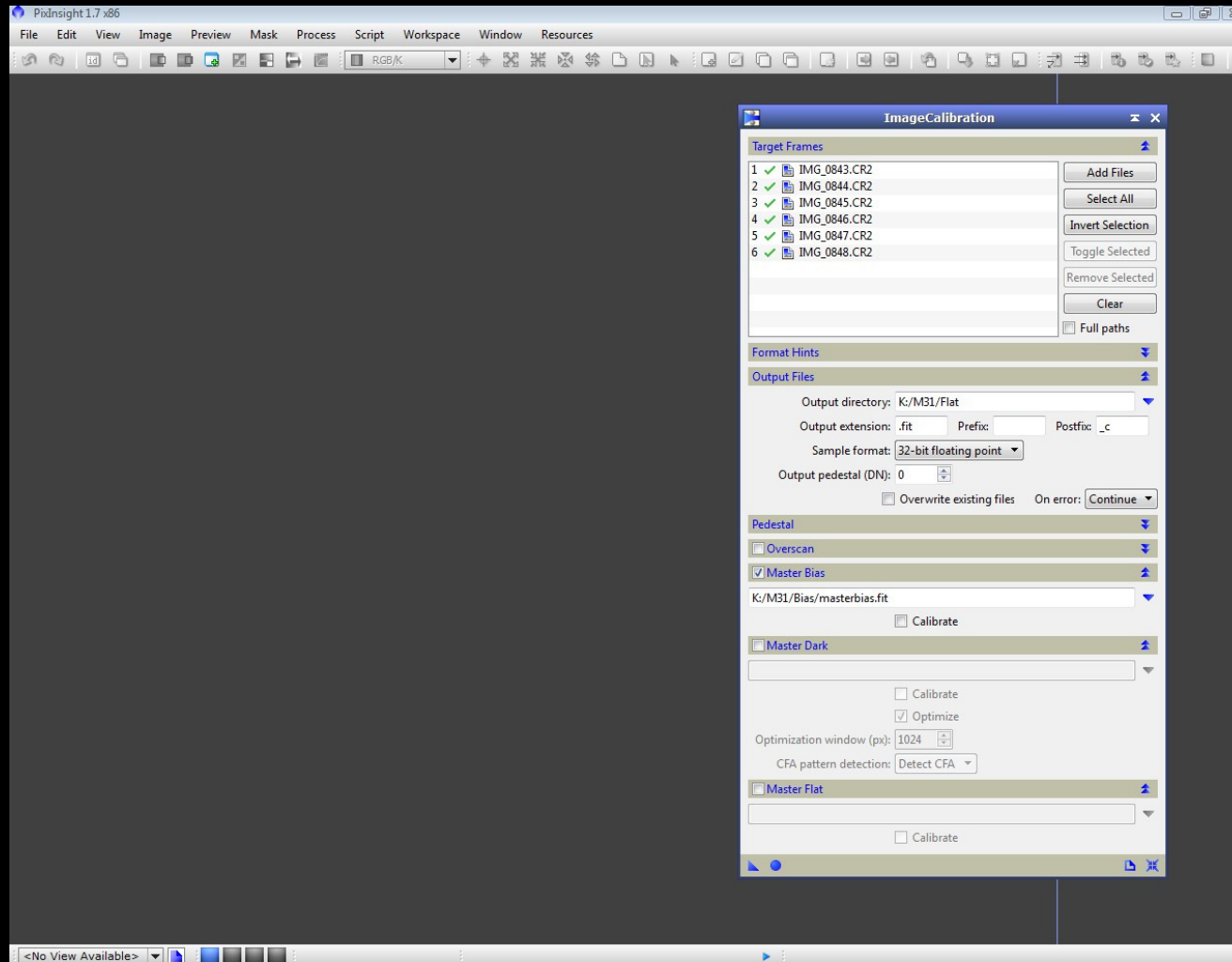
Bias Integration



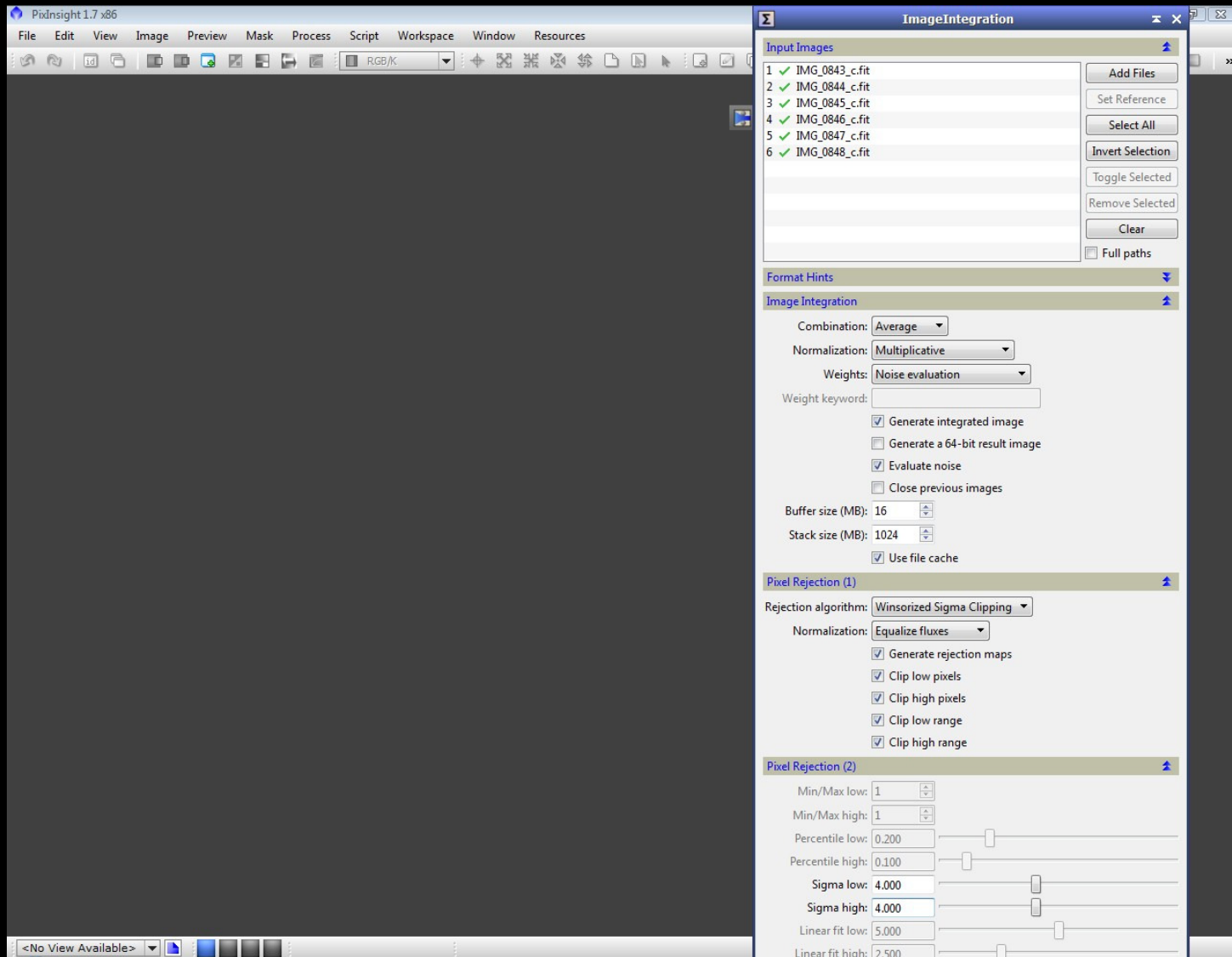
Dark Kalibrierung



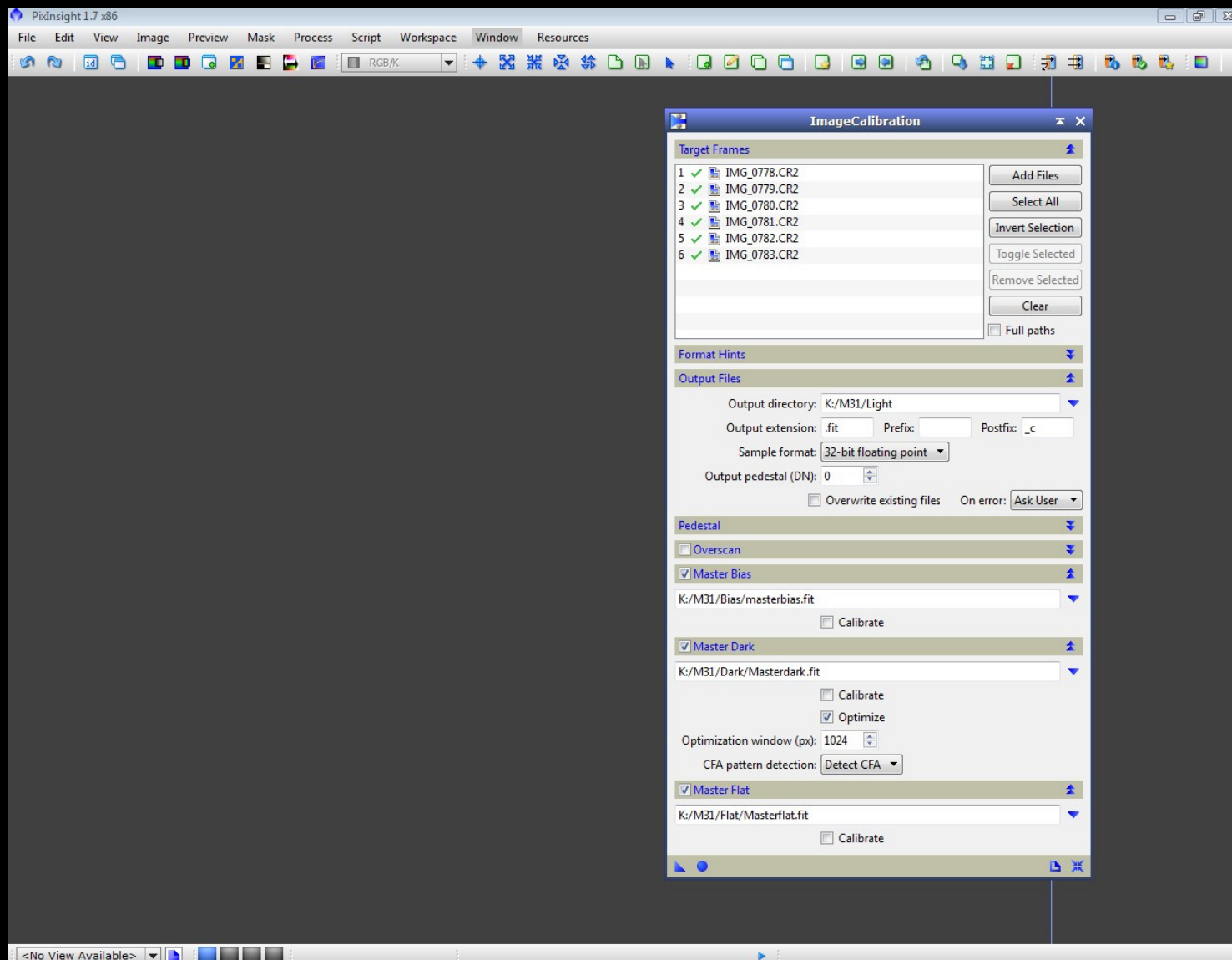
Dark Integration



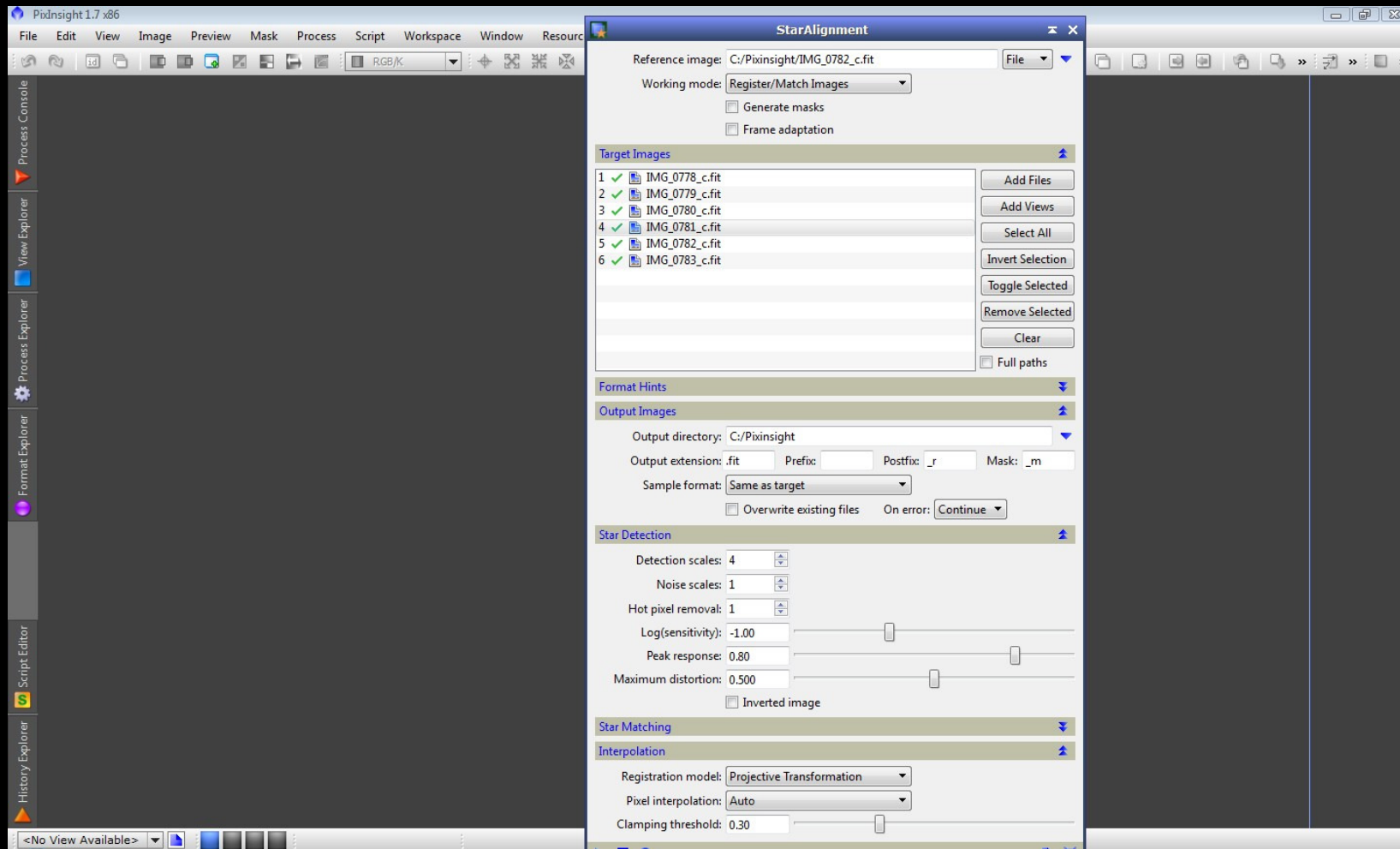
Flat Kalibrierung



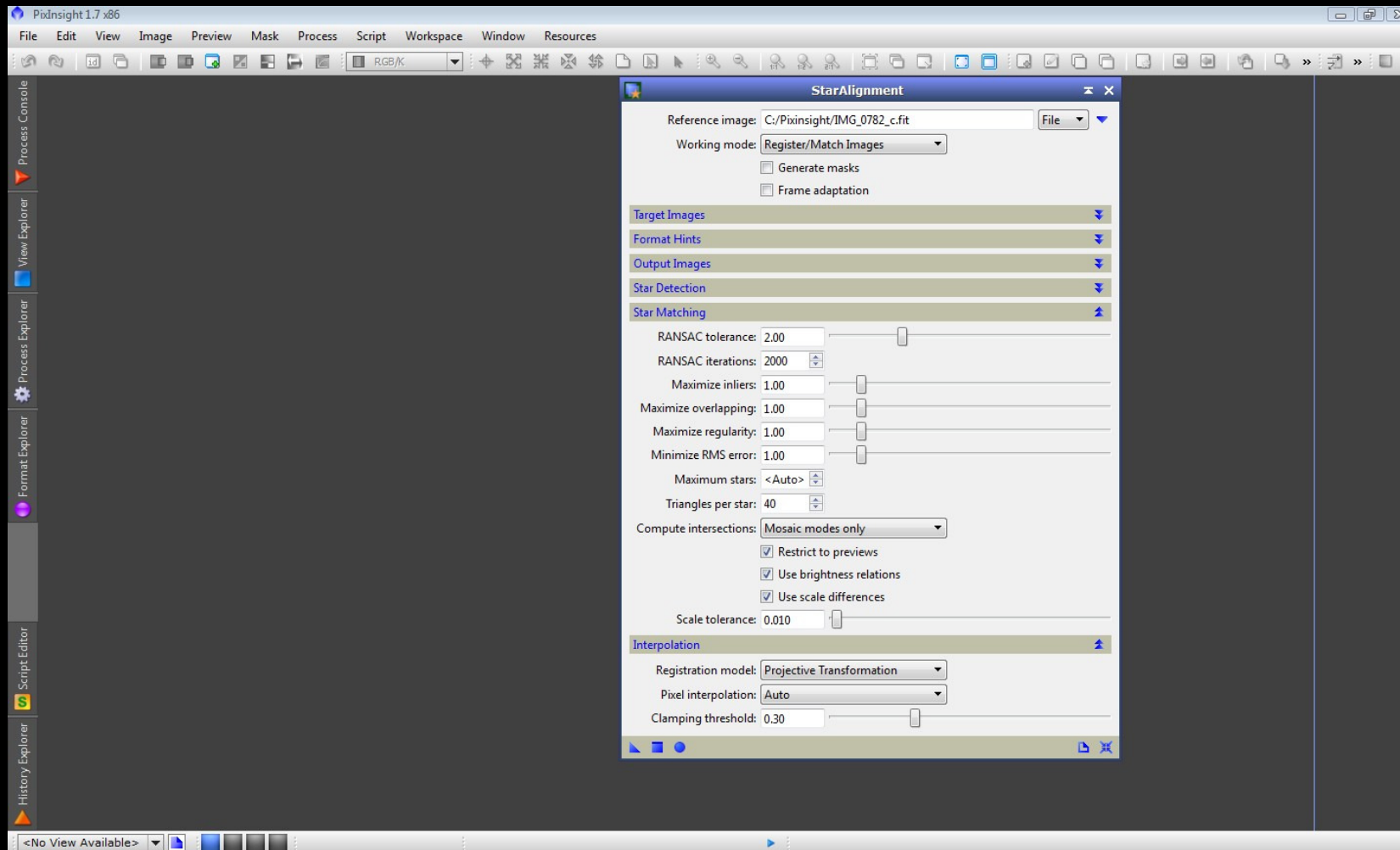
Flat Integration



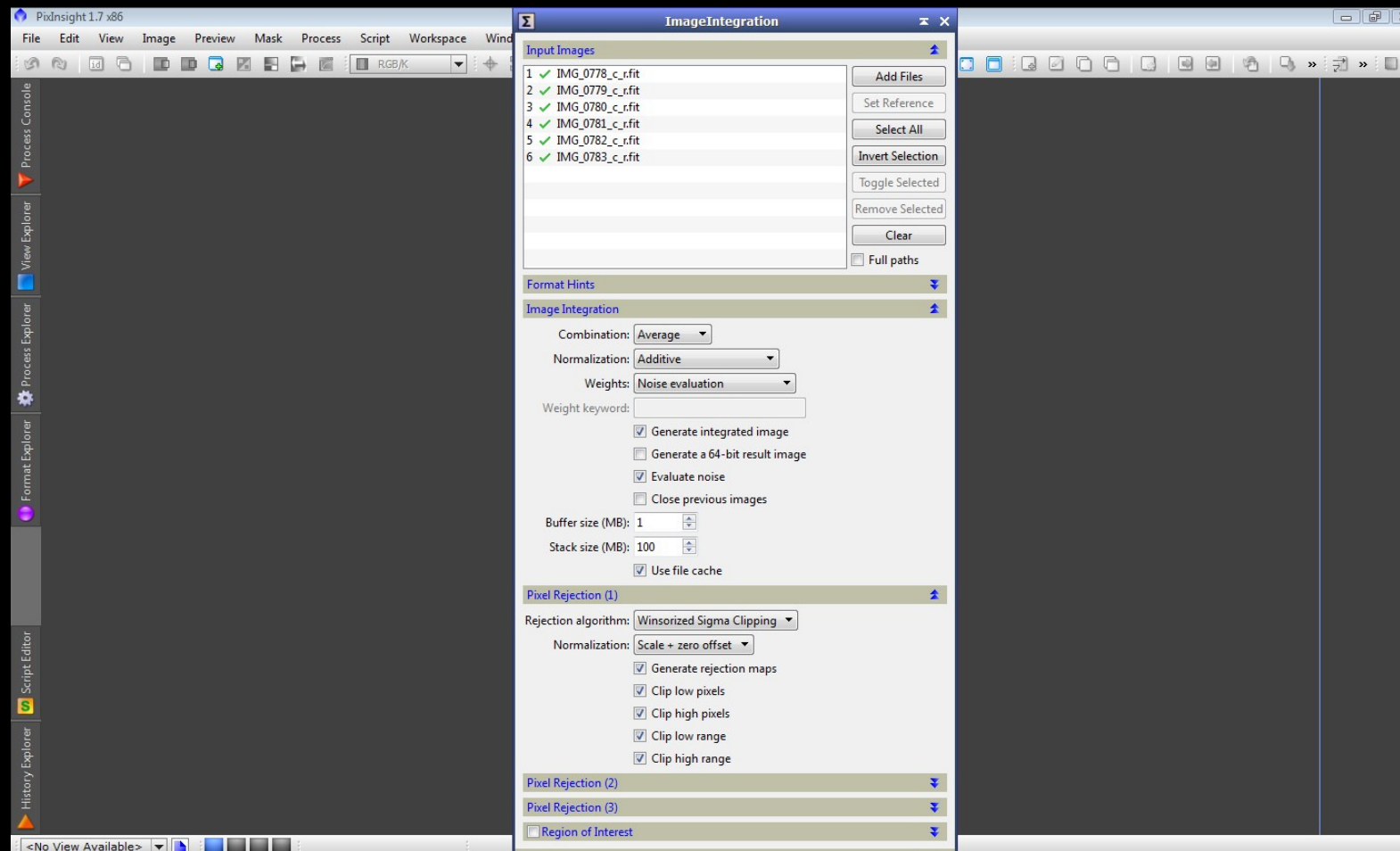
Light Kalibrierung



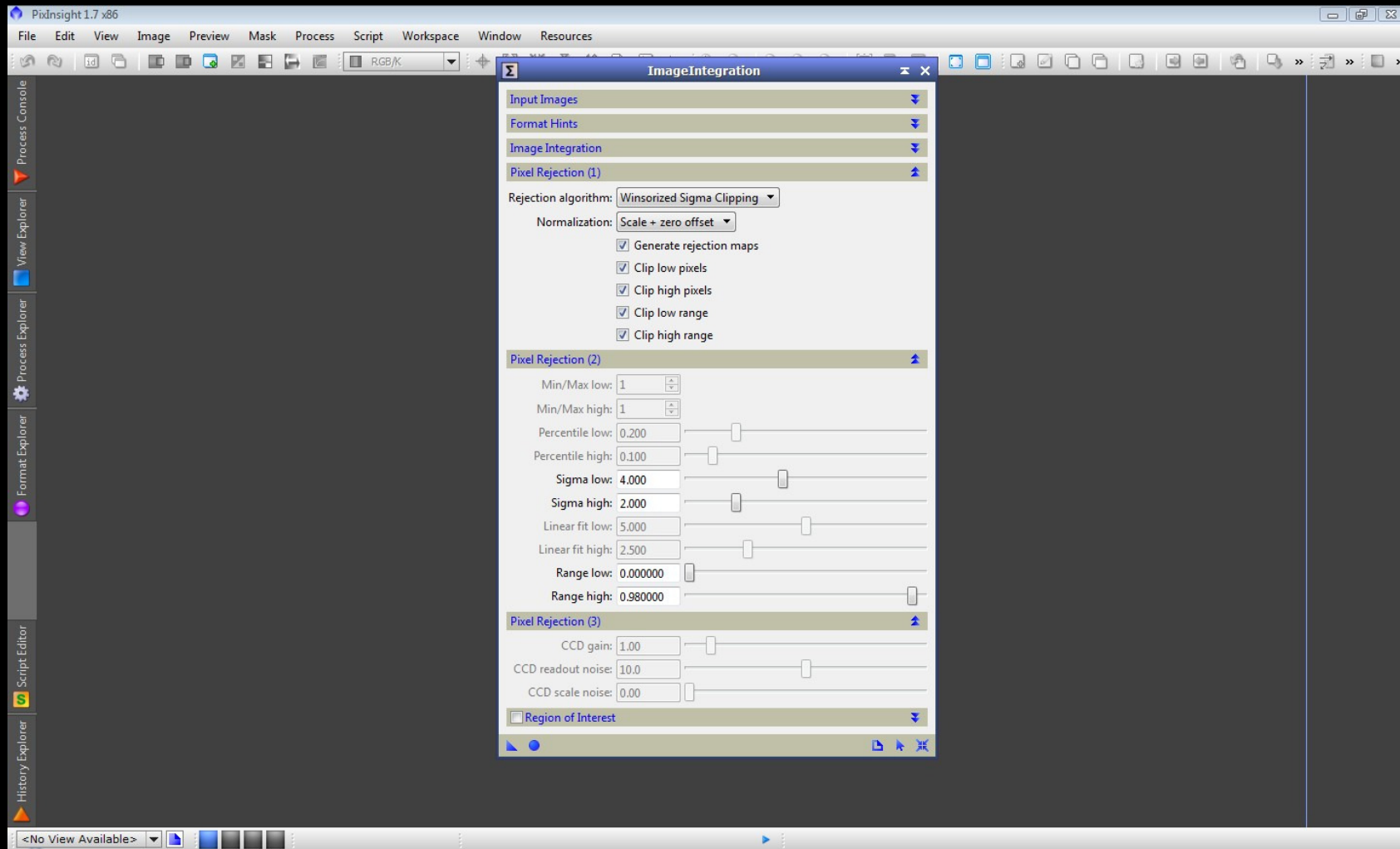
Star Alignment



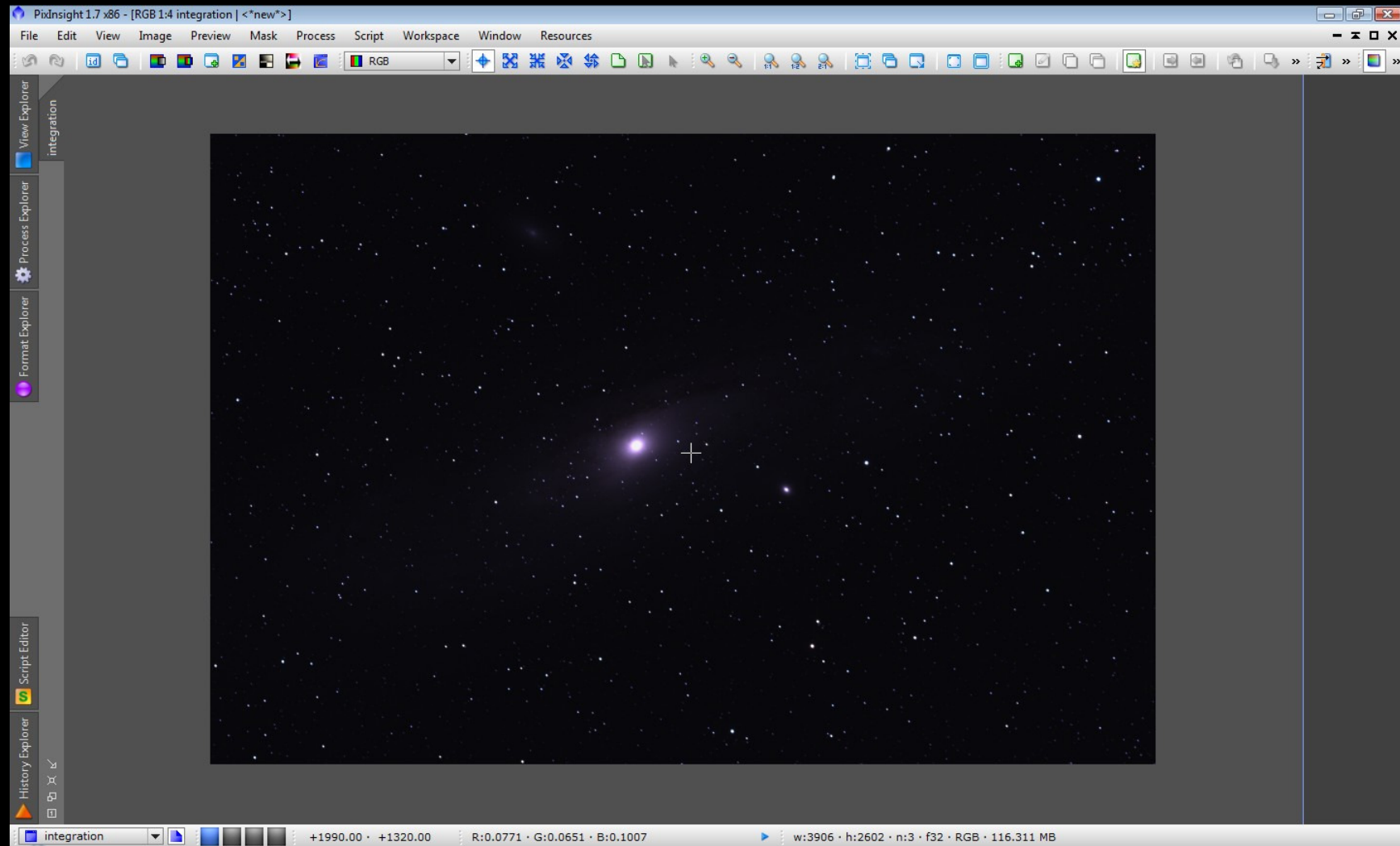
Star Alignment



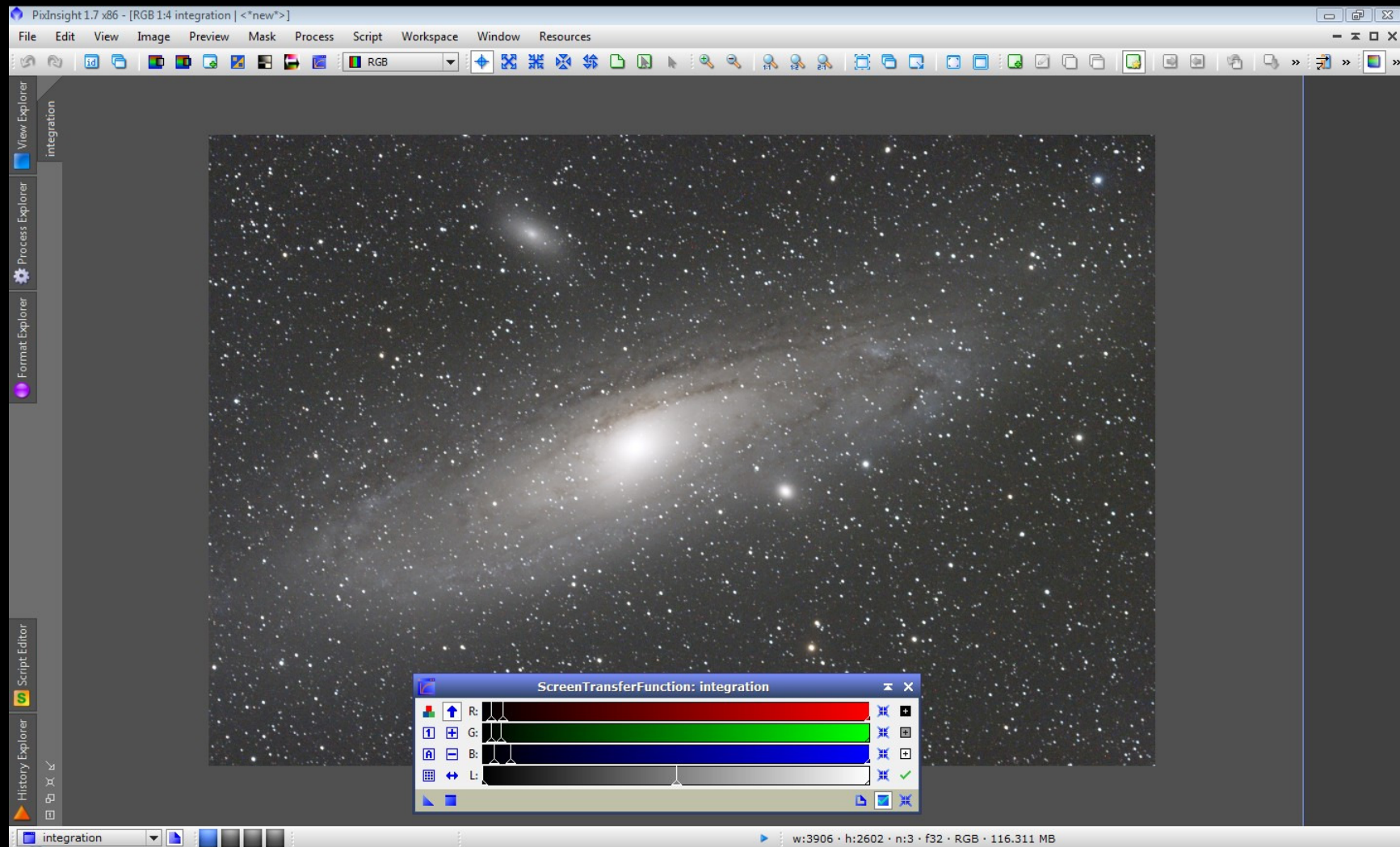
Light Integration



Light Integration



Gestacktes Bild



Gestacktes Bild STF

